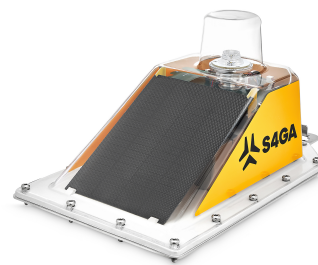






SP-102S SOLAR TAXIWAY EDGE LIGHT

LOW INTENSITY



				Compliance: ICAO Annex 14 Vol. I (8th. Edition, July 2018) EASA CS-ADR-DSN FAA AC
---	---	---	---	---

FEATURES

- Self-contained solar light
- 300 hrs of autonomy
- 11 cd light output

APPLICATION

Low intensity, self contained solar light, designed for temporary usage at airports located in regions without access to electricity and with high photovoltaic potential.

TECHNICAL SPECIFICATIONS

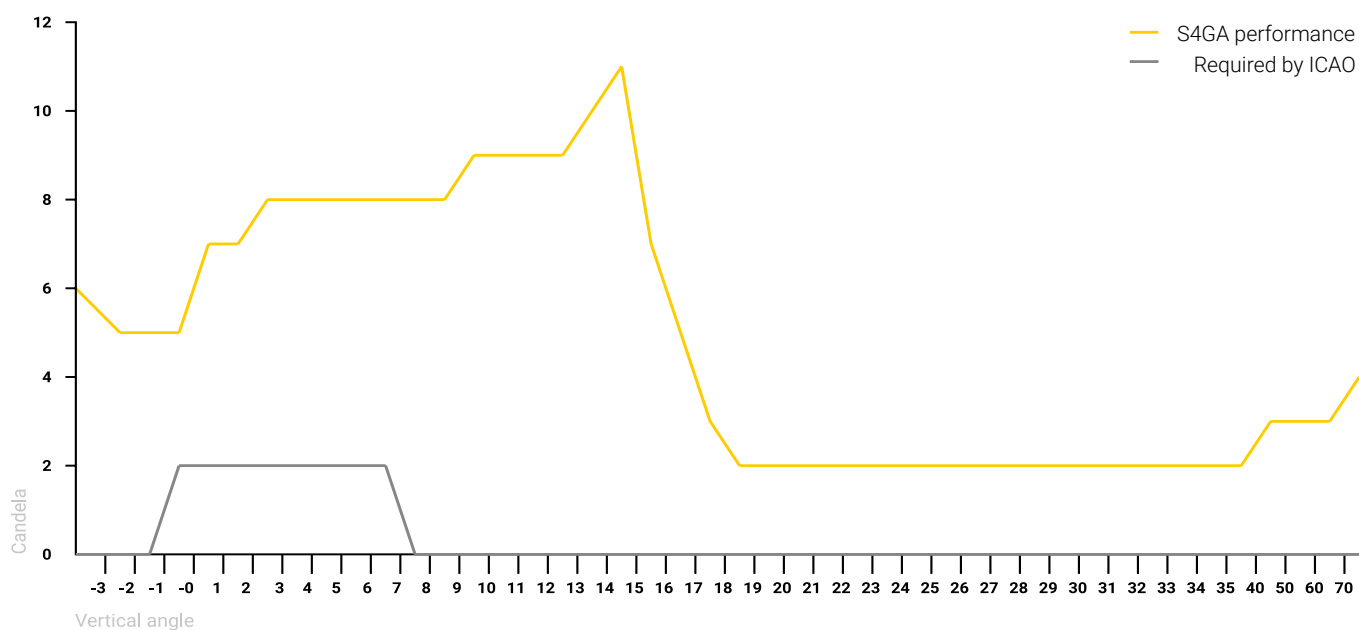
Optics		Safety & Reliability	
<ul style="list-style-type: none"> • 11 cd light output (tested by accredited laboratory) • Omnidirectional • LED lifespan: 100.000 hrs • Maximum power consumption: 0,6W • NVG-compatible, Infrared LEDs (optional) • Color: blue • User-replaceable 		<ul style="list-style-type: none"> • Five levels of protection against system failure • Secondary power supply: backup battery • Real-time monitoring via ALCMS (Airfield Lighting Control and Monitoring System) 	
Battery		Environmental Conditions	
<ul style="list-style-type: none"> • Built-in battery • Autonomy: 300 hrs (minimum intensity) • Total capacity: 108W (9Ah/12V) • Deep-cycle VRLA, 12V/9Ah (available worldwide) • Lifespan: 1.200 cycles (designed for 4-5 years) • User-replaceable, air transportable 		<ul style="list-style-type: none"> • Temperature range: -20 to 50 °C (-4 to 122 °F) Optional: -40 to 80 °C (-40 to 176 °F) • Ingress protection: IP-65 • Jet Blast Resistance: 480 kph 	
Solar Power Supply		Compliance	
<ul style="list-style-type: none"> • 5W built-in solar panel • Polycrystalline type • Lifespan: 15 years • MPPT-Temp / Built-in inverter 12-36V/2A 		Photometric & Chromaticity	ICAO, Annex 14th, Volume I, 8th Edition dated July 2018, clause 5.3.18.7 & clause 5.3.18.8, Appendix 1, Figure A1-1b
		Jet Blast Resistance	ICAO, Annex 14th, Volume I, 8th Edition dated July 2018, Doc 9157, Part 6, clause 3.2.2 & clause 4.9.1 FAA AC 150/5345-50B dated September 2007, clause 3.2.2
		Frangibility	ICAO Doc 9157 AN901 Aerodrome Design Manual Part 6, 1st Edition dated 2006, clause 4.9 ICAO, Annex 14th, Volume I, 8th Edition dated July 2018, clause 5.3.1.3 FAA AC 150-5345-46E clause 3.4.2.1 FAA AC 150/5220-23, clause 3.2
		Secondary Power Supply	ICAO, Annex 14th, Volume I, 8th Edition dated July 2018, clause 8.1.8 - 8.1.9 & clause 8.1.11
		CE Declaration of Conformity	2014/53/EU RED Directive, clauses 3.1a, 3.1b, 3.2 2011/65/EU ROHS Directive, clause 4.1
Control & Monitoring		Accredited Laboratory Testing	
<ul style="list-style-type: none"> • Wireless mesh type network • Operating frequency: 868 MHz • Operating range: up to 1.5 km, relayed (each light is a repeater) • Operating Modes: Steady / Flashing / Dusk till dawn Visible / Infrared (optional) / Visible + Infrared (optional) • Activation options: Via UR-101 Handheld Controller Via ALCMS Computer Interface (requires UR-201) Via UR-201 Control & Monitoring Unit 		Photometric & Chromaticity	Intertek Laboratory
		Jet Blast Resistance	Warsaw Institute of Aviation The Laboratory of Aerodynamics
		Frangibility	Laborex Research Laboratory
		Ingress Protection	EMAG Institute of Innovative Technologies
Casing & Components			
<ul style="list-style-type: none"> • Materials Casing, Dome: polycarbonate, UV-resistant Mounting: galvanized steel (optional: marine grade stainless steel) Frangible mounting: aluminum (tested by accredited laboratory) • Built in antenna (optional: external antenna) • Pressure stabilizing valve • Battery level indicator • Carrying handle • Casing lifespan: 15 years • Dimensions (LxWxH): 455 x 280 x 254 mm • Weight: 9,9 kg 			

ORDERING CODES

SP-102S TWY - X - X - X

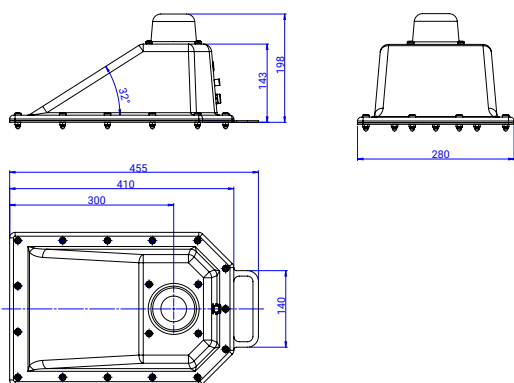
Remote Control	0 - No 1 - Yes
Infrared	0 - No 1 - Yes
Mounting	0 - No 1 - Yes

PHOTOMETRIC PERFORMANCE

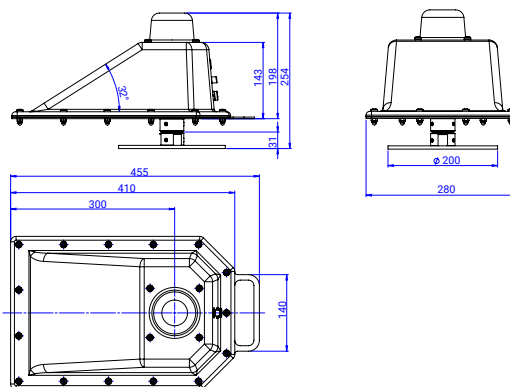


TECHNICAL DRAWING

Portable version (without mounting)



Fixed version (with mounting)



SHIPPING DATA

Item	Dimensions of Package (LxWxH)	Gross Weight
SP-102S Lighting Unit	500 mm x 300 mm x 210 mm	10,5 kg
SP-102S Lighting Unit, NO battery	500 mm x 300 mm x 210 mm	7,9 kg